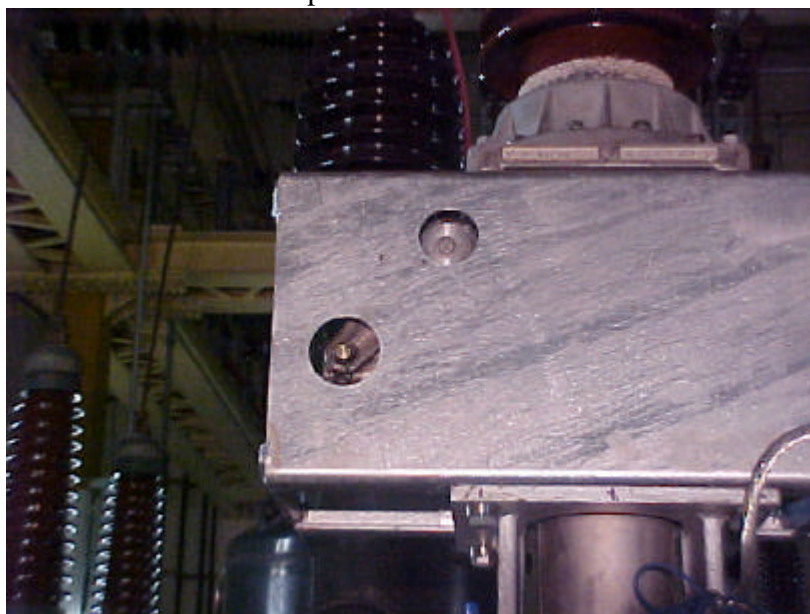


EXAMPLE 2 : AREVA GL Breaker (tests performed in Québec, Canada)

The GL212 breaker is manufactured by AREVA (formerly Alstom). The motion of this breaker can be checked at both ends of the breaker with different displacement kits.

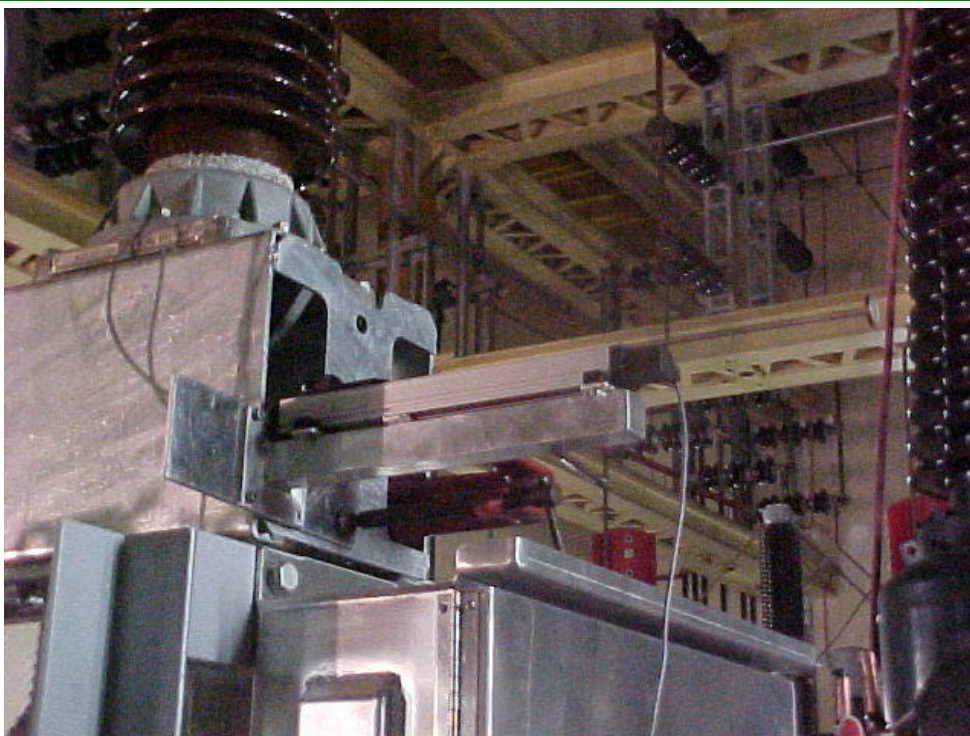


Close-up view of the mechanism



As shown below, the **KIT-ZLB linear kit** was directly installed with a **ZLT-225 linear transducer** without any particular adaptation.

ZENSOL AUTOMATION INC.



7075 Place Robert-Joncas #139, St Laurent, QC, H4M 2Z2, Canada Tel: (514) 333-3488 Fax: (514) 333-3499
www.zensol.com E-mail: zensol@zensol.com

ZENSOL AUTOMATION INC.



Here is the same breaker with a **KIT-ZLR linear-to-rotary converter** (Hydro-Québec licence) in place, along with a **ZRT-10 ten-turn rotary transducer** (note: **ZRT-3 three-turn transducer** could also have been used here). The mechanical base used here was an older model. To see the new model, please see our accessories section.

