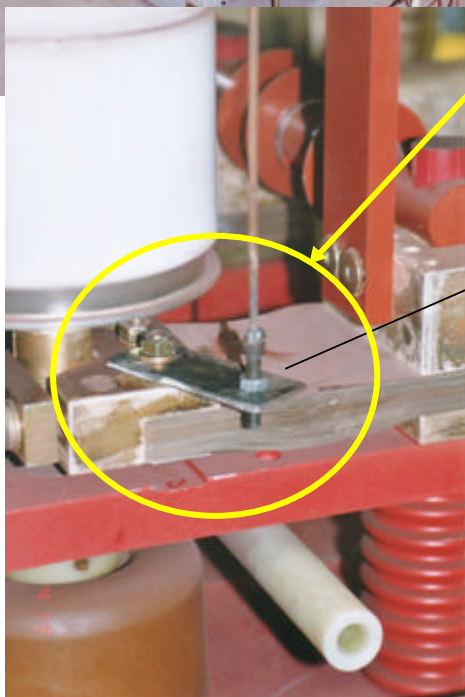
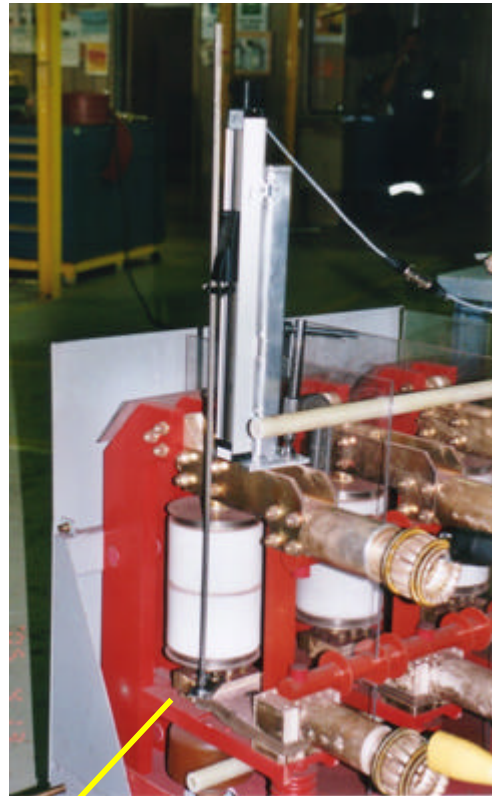
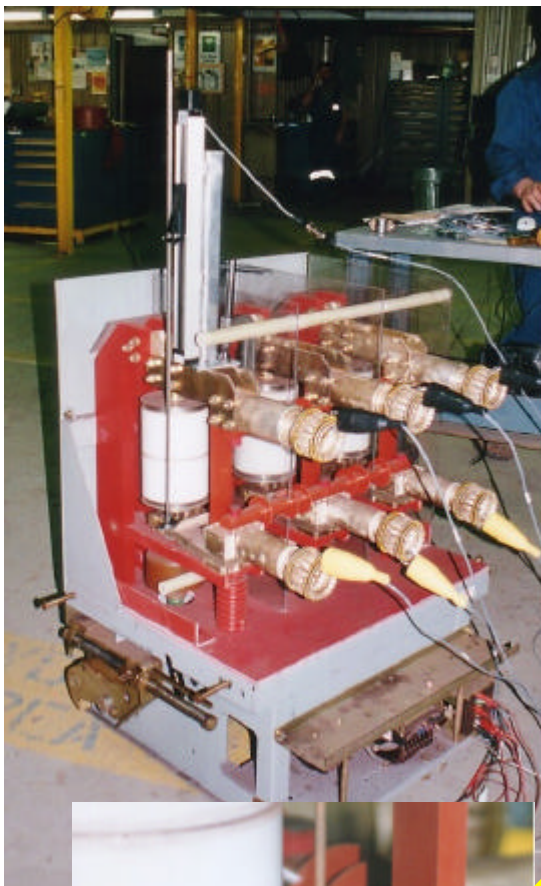


## EXAMPLE 11 : ABB BREAKERS (tests performed in Labrador, Canada)

The breakers shown here are widely used by industrial customers such as aluminum factories, mines, paper mills, etc. The three phases are visible. The transducer was installed on top of the breaker with a minor adaptation, as shown in the following photos.



The displacement of this breaker is very small (less than  $\frac{1}{2}$  inch). The rod was attached to the breaker with a simple steel plate.