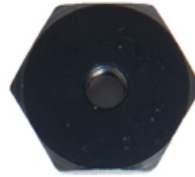
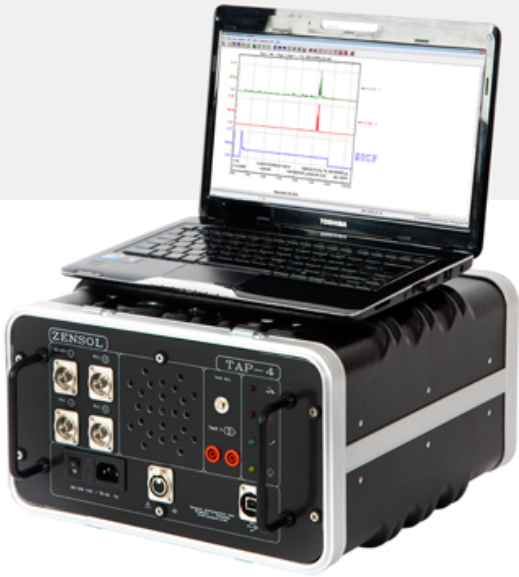


# TRANSDUCERS



## Accelerometer base

Reference: TAP-BASE  
Mounting base for accelerometers

## Accelerometer ICP 10g



Référence: ACC-10g  
For on line tap changers  
Measurement range:  
+/- 500 mV/g +/- 10g

## Accelerometer ICP 50g



Référence: ACC-50g  
For on line tap changers  
Measurement range:  
+/- 100 mV/g +/- 50g

## AC Current Clamp



Référence: CT-CLAMP-AC  
Measures AC currents from  
20 to 200 Amps

## AC/DC Current Clamp



Reference:  
CT-CLAMP-AC/DC  
Measures AC or DC currents  
up to 30 Amps



## Dynamic Resistance

Combined with vibroacoustic tests, contact dynamic resistance measurements can help to precisely synchronize contact motion.