

# CBA-32P-.. C-5A

2 BUILT IN  
CURRENTS +  
3 ANALOG  
INPUTS



# CBA-32P-.. C-8A

2 BUILT IN  
CURRENTS +  
6 ANALOG  
INPUTS



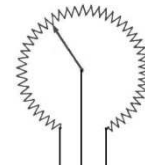
Cable :  
EXT-CONT-N  
(25' 50' 100' 150')

RESISTIVE  
ROTARY  
TRANSDUCER



## ZRT

Resistive technology  
(potentiometer)



Ref.: ZRT-01 : 1 TURN : 360°  
ZRT-03 : 3 TURNS : 1080°  
ZRT-05 : 5 TURNS : 1800°  
ZRT-10 : 10 TURNS : 3600°

MECHANICAL  
LINEAR-TO-ROTARY  
CONVERTER



## KIT ZLR

Ref.: KIT-ZLR

Transforms a linear  
displacement in a  
rotary displacement

EXAMPLE:  
CIRCUIT BREAKER  
WITH LINEAR  
MOTION

